

clinical examination of parasite

人中学一体寄生 **human parasitology**)

也称医学寄生虫学 (**medical parasitology**)

，是研究与人体健康有关的寄生虫的形态、生活史、致病、免疫、防治等问题的科学。

医学寄生虫学是医学与寄生虫学交叉的一门基础学科。

学科 一门基础

内容包括：医学原虫

医学蠕虫

目的:

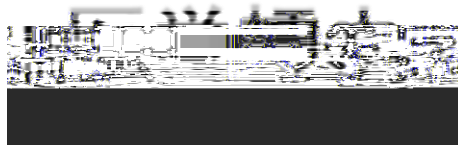
认识寄生虫的危害性

认识寄生虫的危害性

clinical examination

of parasite

▶ 学科名称 医学原虫



医学微生物学

实验技术



➤ **(malaria)** **2.16** **81%**

70 **86%** **5**

➤ **(schistosomiasis)** **76** **7**
2.4 **50** **100**

➤ **)** **80** **1.2**
4000 **3700**
27 **50**

➤ **(leishmaniasis)** **1200**

➤ (**trypanosomiasis**)
1800



➤ **10** **7.95**

➤ **7.4**

➤ **1%**

➤ **2**

1988~1999

7.08

1500

229
62.63%,



malaria

schistosomiasis

filariasis,

leishmaniasis

trypanosomiasis,



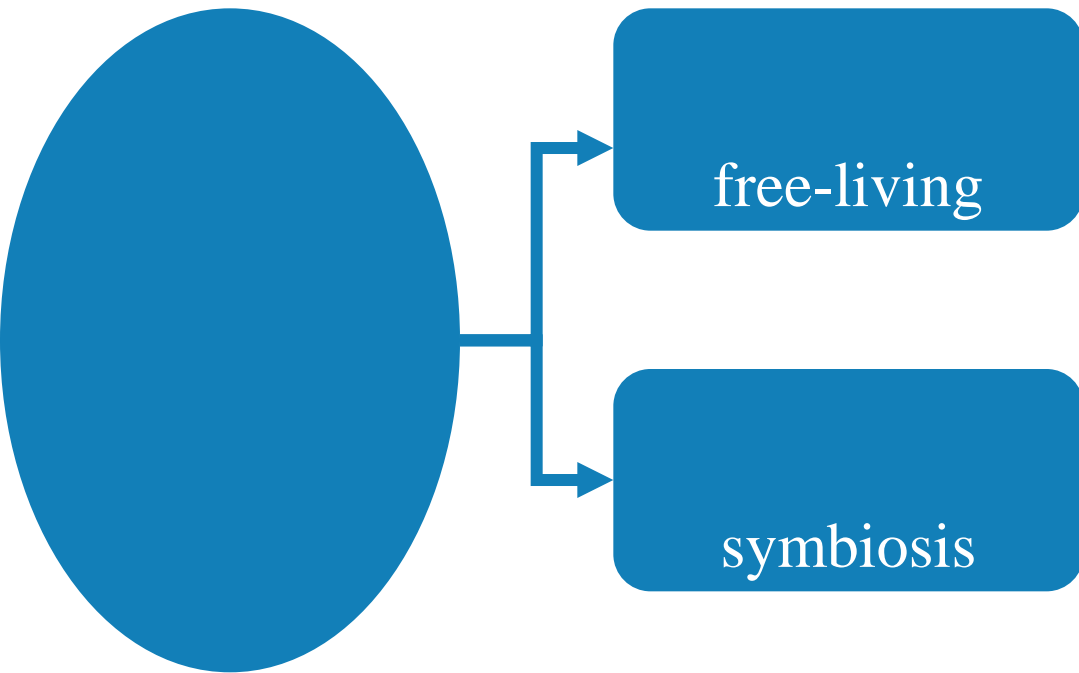
malaria

schistosomiasis

filariasis

kala-azar

ancylostomiasis



- commensalism
- mutualism
- parasitism

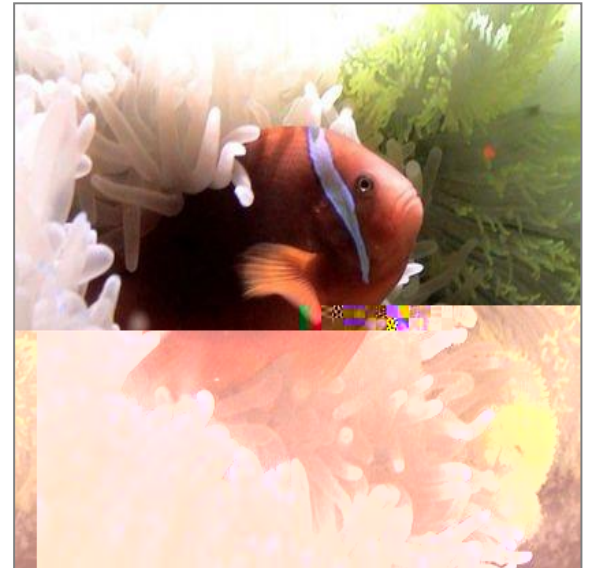
1

commensalism



2

mutualism





parasite

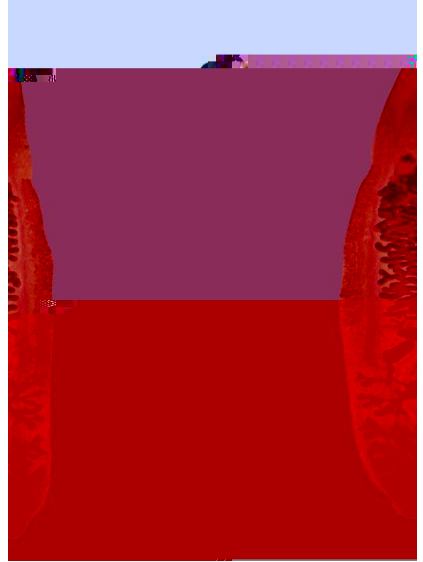
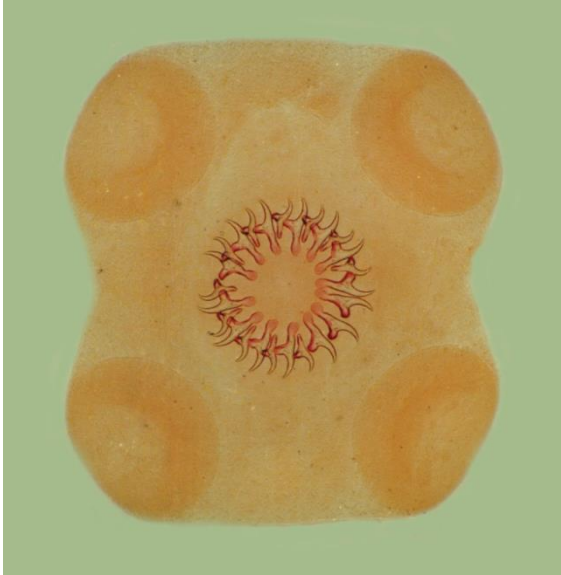


host



1

-
-
-



2

-

3



-

5



-

-

4

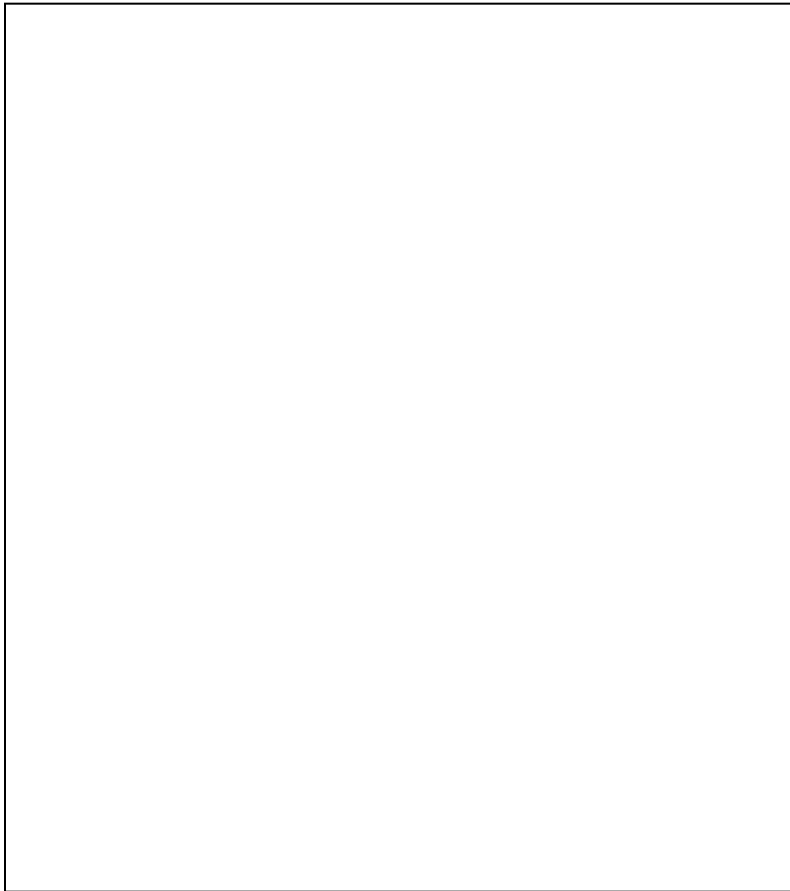


-

6



-



- 1.**
- 2.**
- 3.**

1.

ectoparasite

endoparasite

obligatory parasite

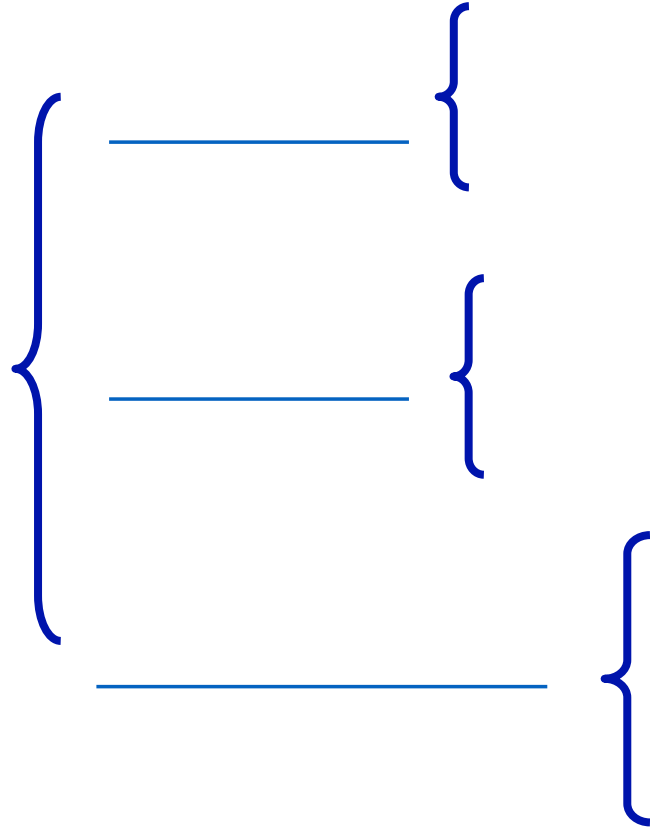
facultative parasite

accidental parasite

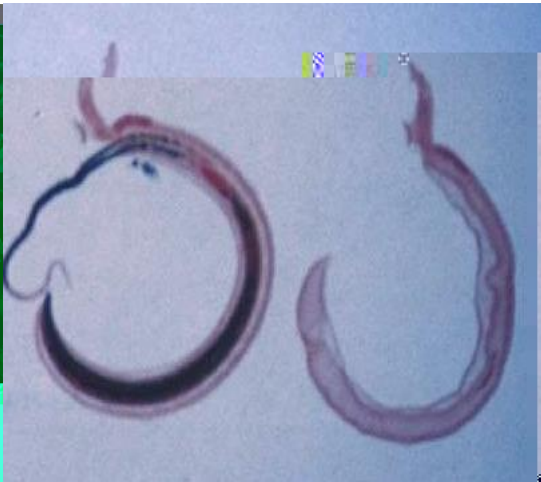
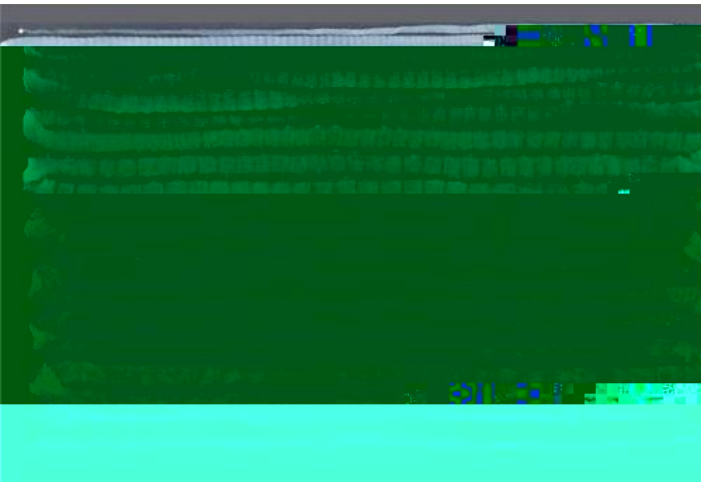
opportunistic parasite

permanent parasite

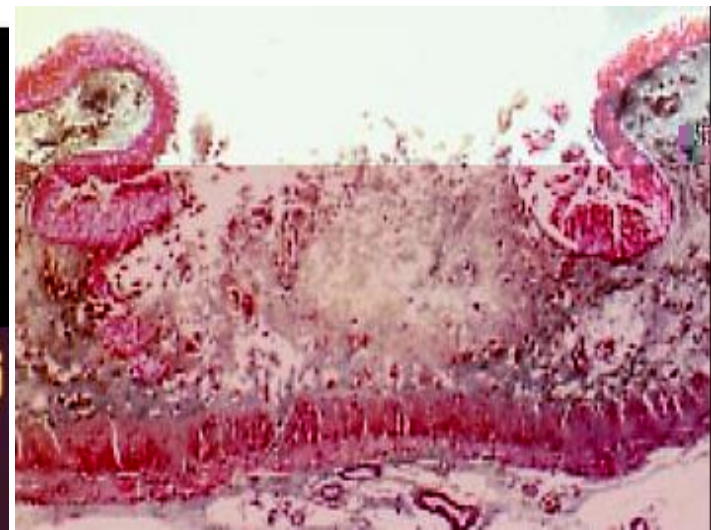
temporary parasite

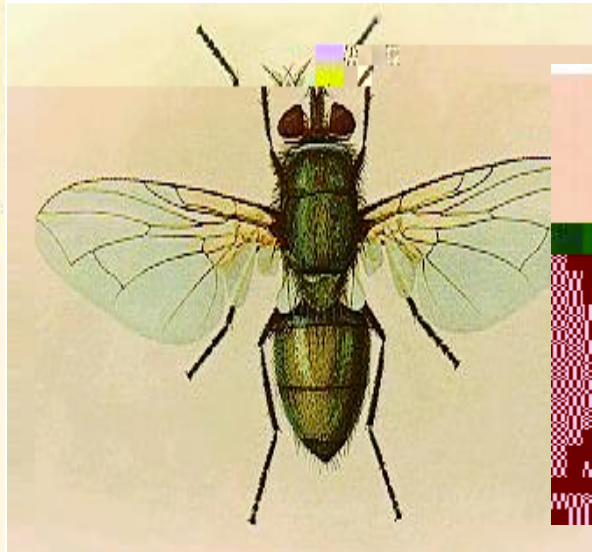
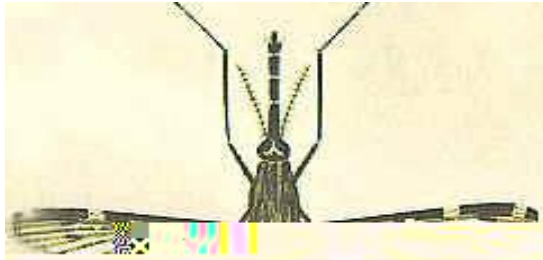


}



2

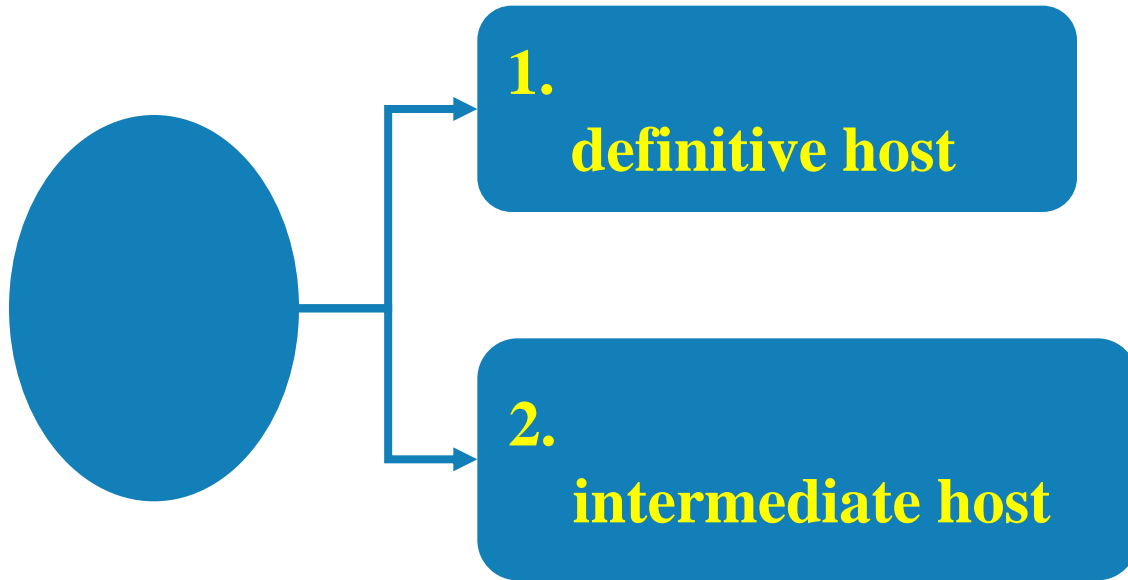




scientific name = genus name + species name

***Schistosoma japonicum* Katsurada, 1904**

host



1.

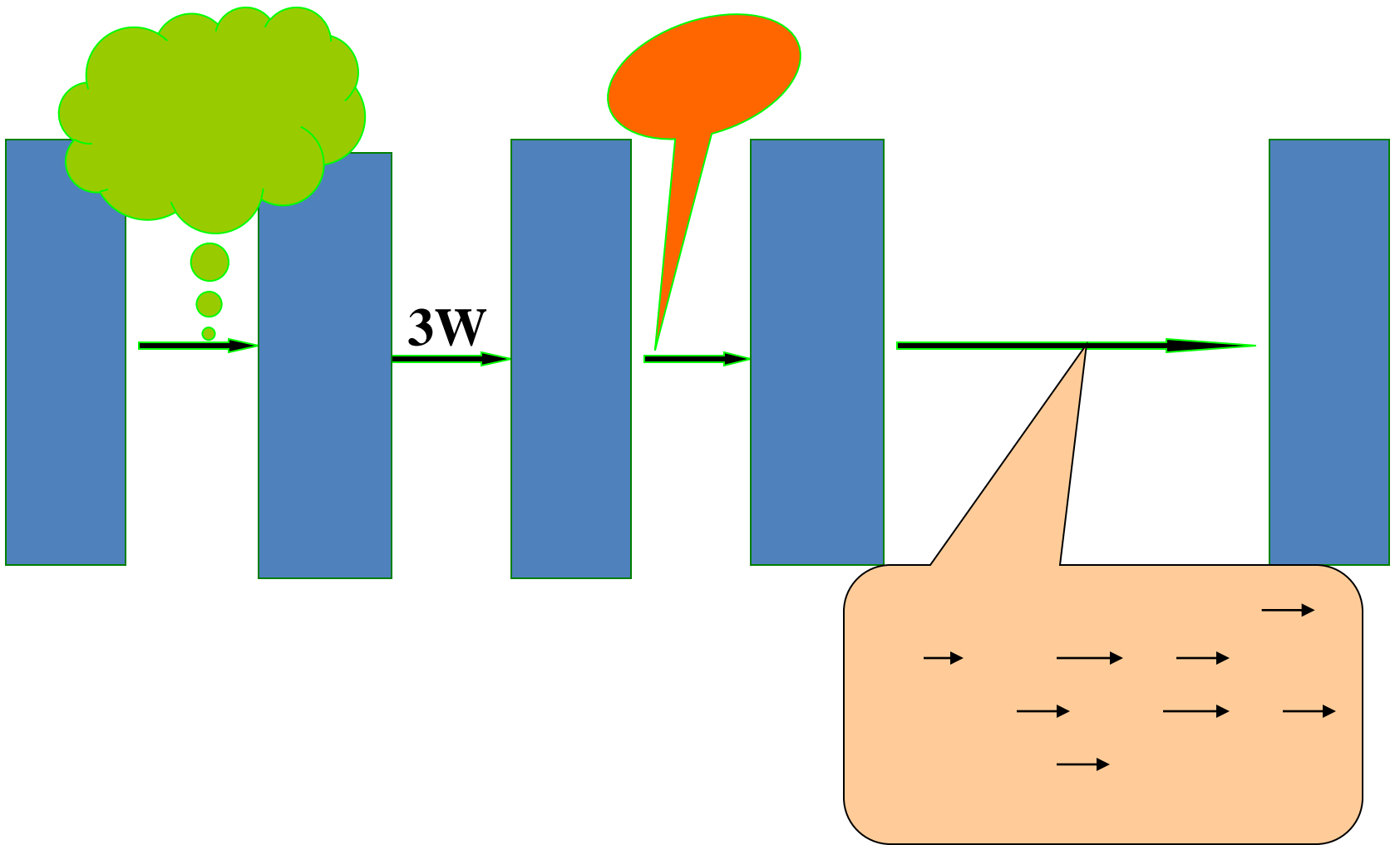
2.

内移行一体

感染人体

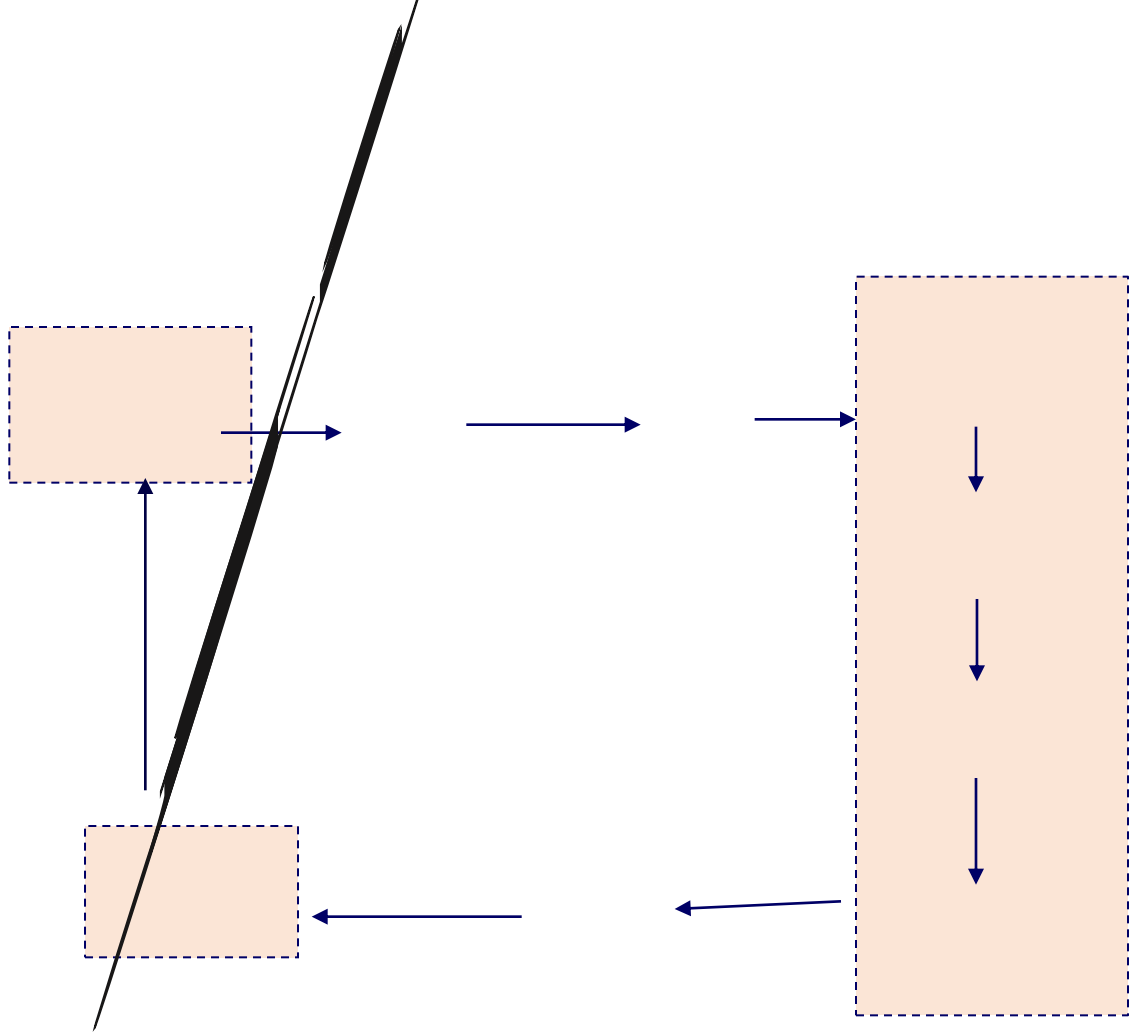
定位寄生

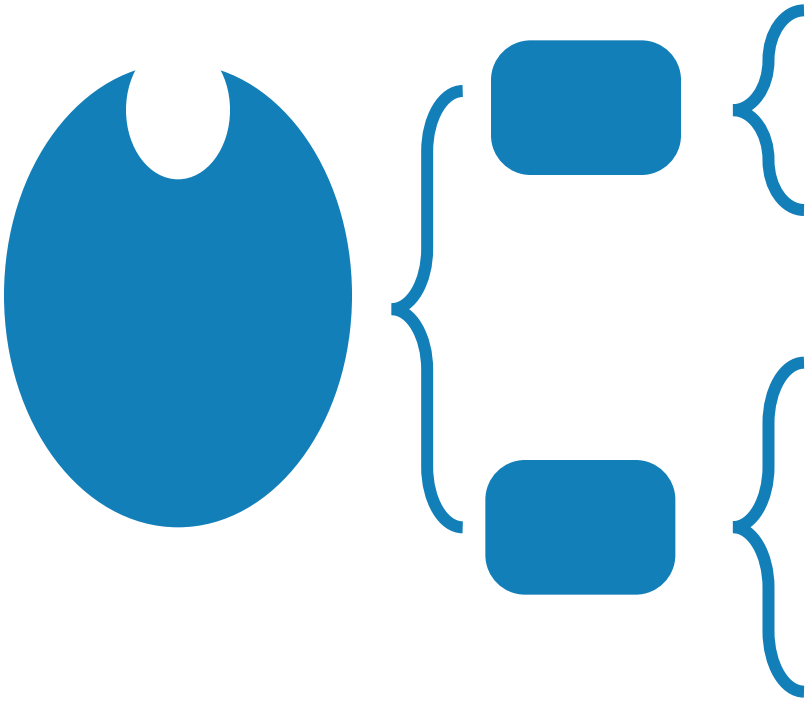
人体



蛔虫生活史











innate immunity non-specific immunity



adaptive immunity specific immunity)



humoral immunity

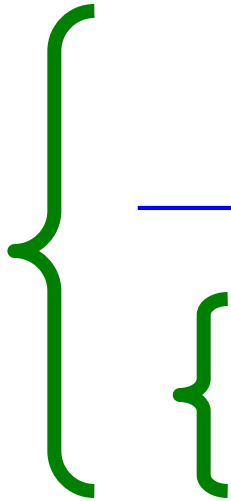
cellular immunity

sterilizing immunity

non-sterilizing immunity

premunition

concomitant immunity





immune evasion





infective stage



parasitic infection

parasitosis



carrier



chronic infection



inapparent/silent infection

polyparasitism

larva migrans

visceral larva migrans

cutaneous larva migrans

ectopic parasitism

ectopic lesion







1.

2.

CT

MRI

X

